

Communication Driver Units

Installation Manual


Headquarters:

DOLI Elektronik GmbH
Rudolf-Diesel-Str. 3
72525 Münsingen, Germany

 +49 89 20243 - 0
Fax +49 89 20243 - 232
Email info@doli.de
Web www.doli.de

Development & Service:

DOLI Elektronik GmbH
Adi-Maislinger-Str. 7
81373 Munich, Germany

 +49 89 20243 - 0
Fax +49 89 20243 - 243

Communication Driver Units

1	Communication Driver Units.....	3
1.1	USB Installation Guide	3
1.1.1	Installation of the USB Drivers for Windows 8, 8.1 and 10	3
1.1.2	Installation of the USB Drivers for Windows 7	8
1.1.3	Uninstalling USB Drivers	15
1.2	Network Installation Guide for Windows 7, 8, 8.1 and 10	16
1.2.1	Installation check with DOLI Installation Center	20

Communication Driver Units

1 Communication Driver Units

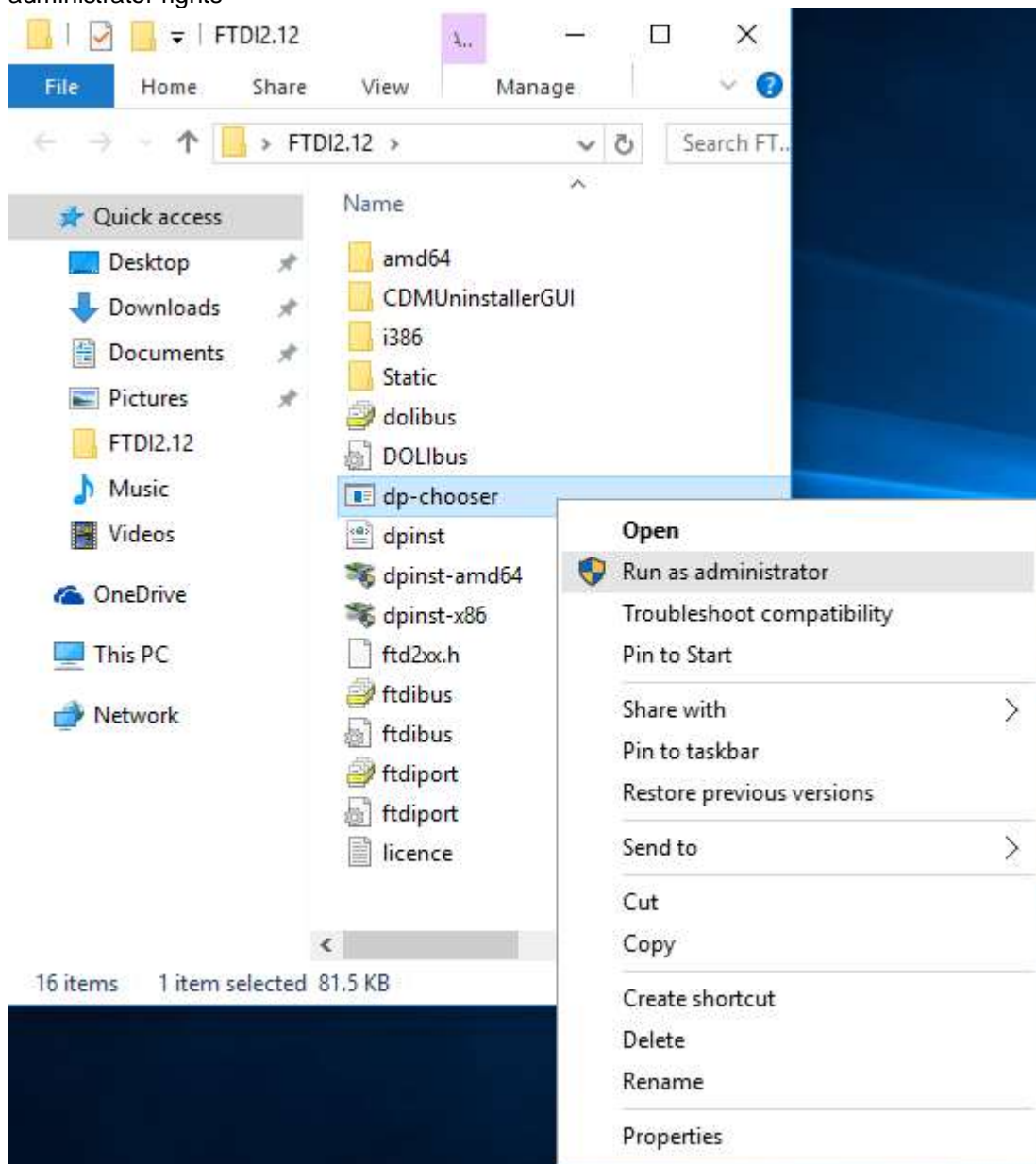
In this manual you can find an USB- and a network installation guide for communication driver units. Please follow the quick steps to install the USB- and network drivers.

Both drivers are digitally signed but have no extended validation certificate. To avoid installation problems please **disable secure boot** in your bios settings.

1.1 USB Installation Guide

1.1.1 Installation of the USB Drivers for Windows 8, 8.1 and 10

- Uninstall any previously installed FTDI drivers with the uninstall tool from <c:\Program Files\Doli\CommunicationDrivers\USB\CDMUninstallerGUI> (refer to chapter 1.1.3)
- Execute the dp-chooser installation tool from <c:\Program Files\Doli\CommunicationDrivers\USB\WIN10> with administrator rights



Communication Driver Units

- Follow the installation instructions

The image shows two screenshots of the 'Device Driver Installation Wizard'.

Top Screenshot: Welcome to the Device Driver Installation Wizard!
 This wizard helps you install the software drivers that some computers devices need in order to work.
 To continue, click Next.

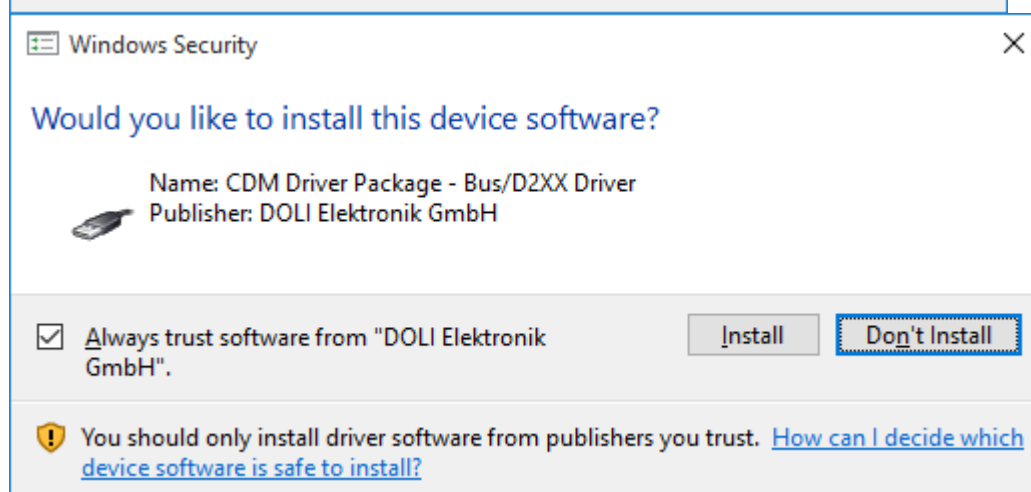
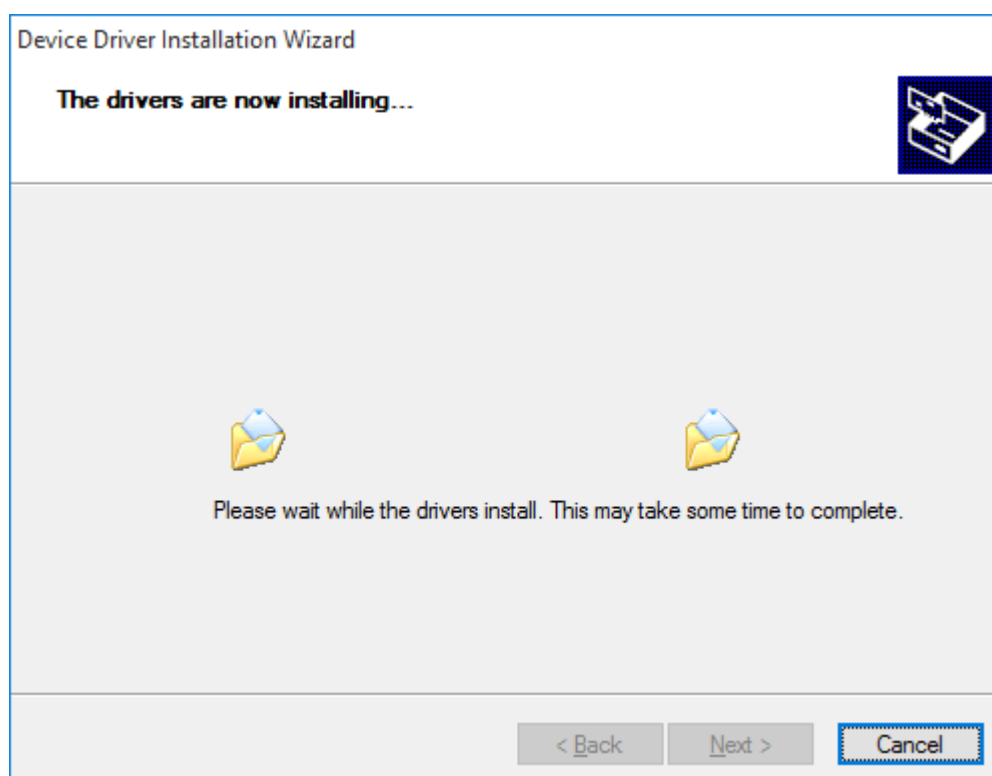
Bottom Screenshot: License Agreement
 To continue, accept the following license agreement. To read the entire agreement, use the scroll bar or press the Page Down key.

IMPORTANT NOTICE: PLEASE READ CAREFULLY BEFORE INSTALLING THE RELEVANT SOFTWARE:
 This licence agreement (Licence) is a legal agreement between you (Licensee or you) and Future Technology Devices International Limited of 2 Seaward Place, Centurion Business Park, Glasgow G41 1HH, Scotland (UK Company Number SC136640) (Licensor or we) for use of driver software provided by the Licensor(Software).

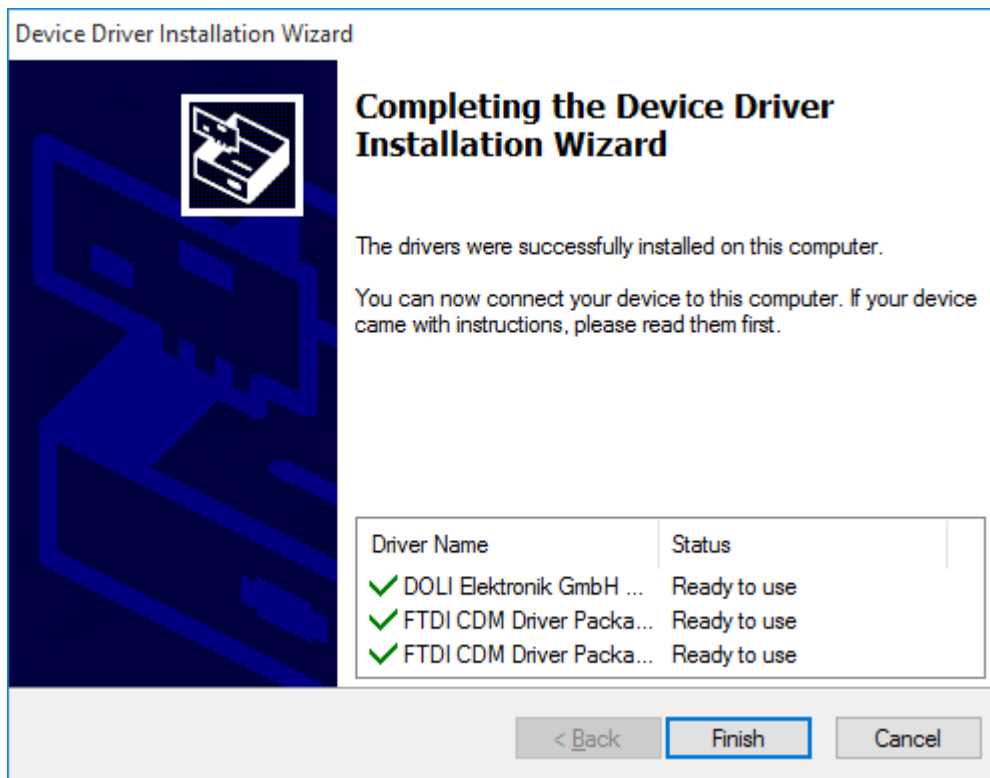
BY INSTALLING OR USING THIS SOFTWARE YOU AGREE TO THE

accept this agreement
 I don't accept this agreement

Communication Driver Units



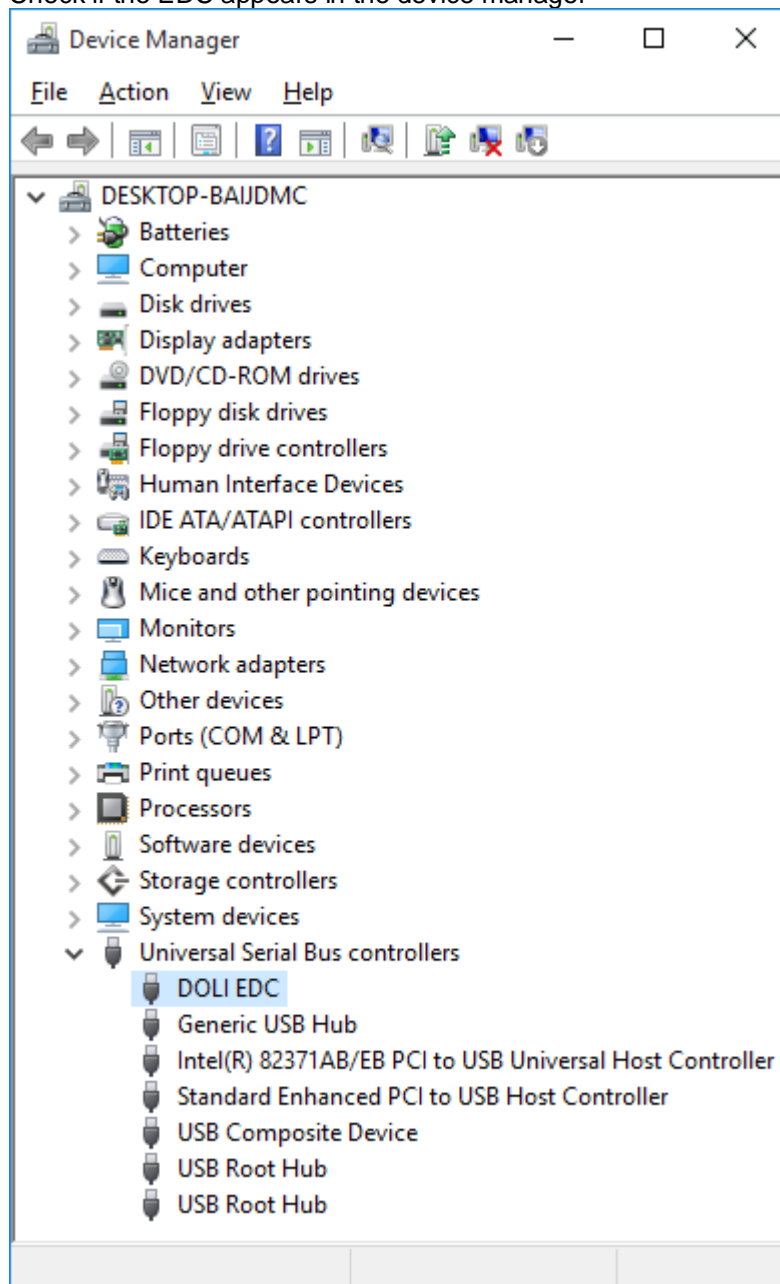
Communication Driver Units



- Connect the USB cable from your PC with the EDC and wait until the installation of the USB drivers is completed.

Communication Driver Units

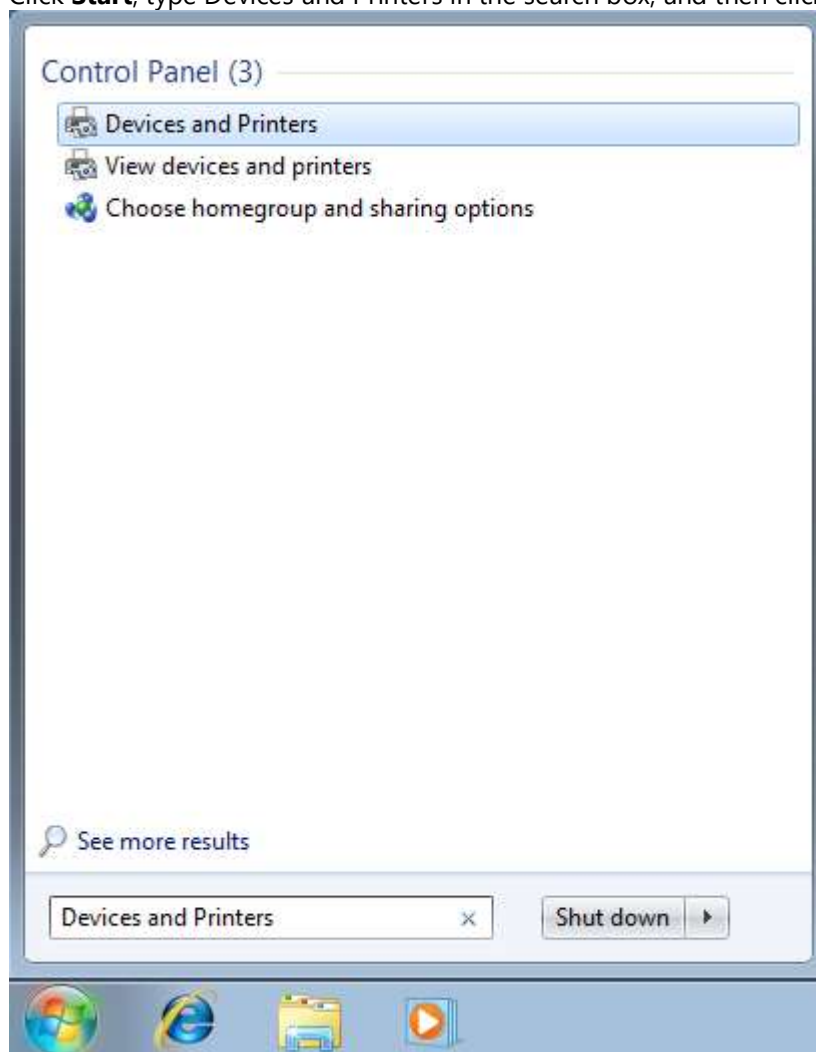
- Check if the EDC appears in the device manager



Communication Driver Units

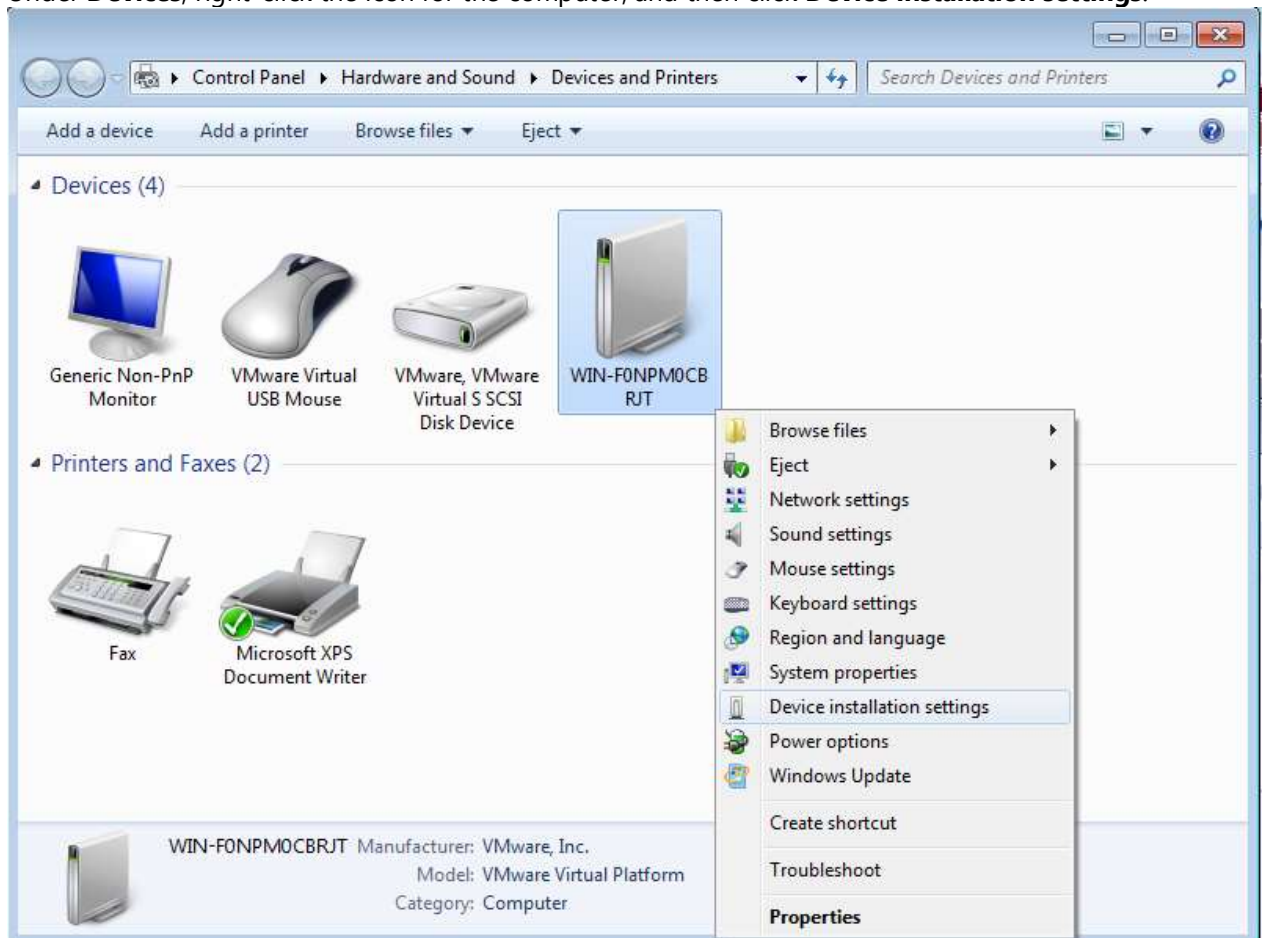
1.1.2 Installation of the USB Drivers for Windows 7

- Uninstall any previously installed FTDI drivers with the uninstall tool from <c:\Program Files\Doli\CommunicationDrivers\USB\CDMUninstallerGUI> (refer to chapter 1.1.3)
- Disable automatic driver installation:
Click **Start**, type Devices and Printers in the search box, and then click **Devices and Printers**.



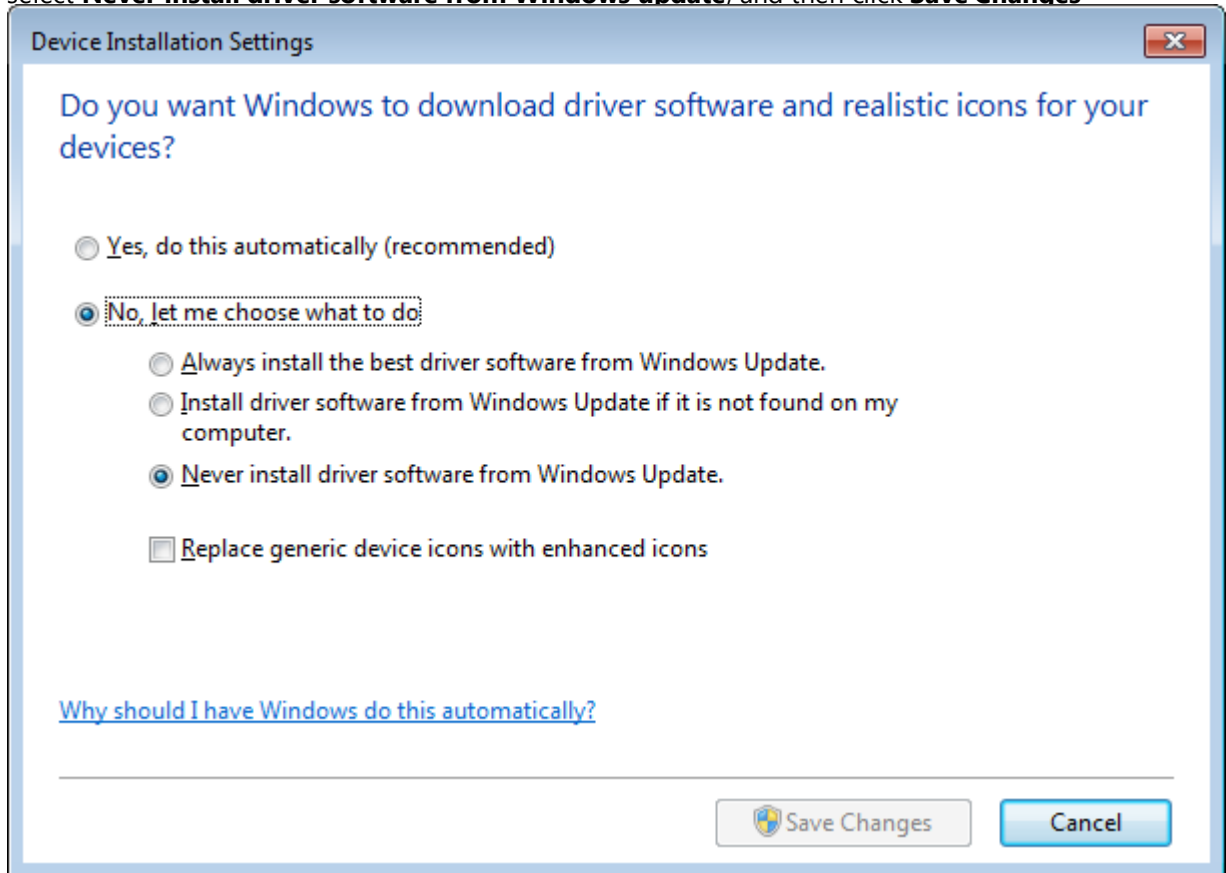
Communication Driver Units

- Under **Devices**, right-click the icon for the computer, and then click **Device installation settings**.



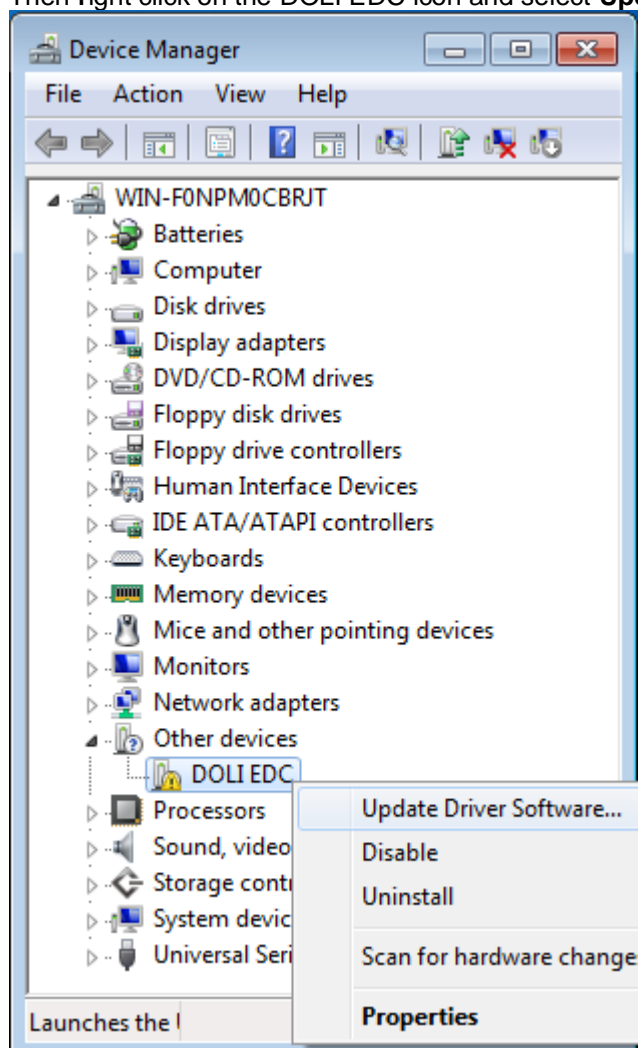
Communication Driver Units

- Click to select **No, let me choose what to do**, select **Never install driver software from Windows update**, and then click **Save Changes**



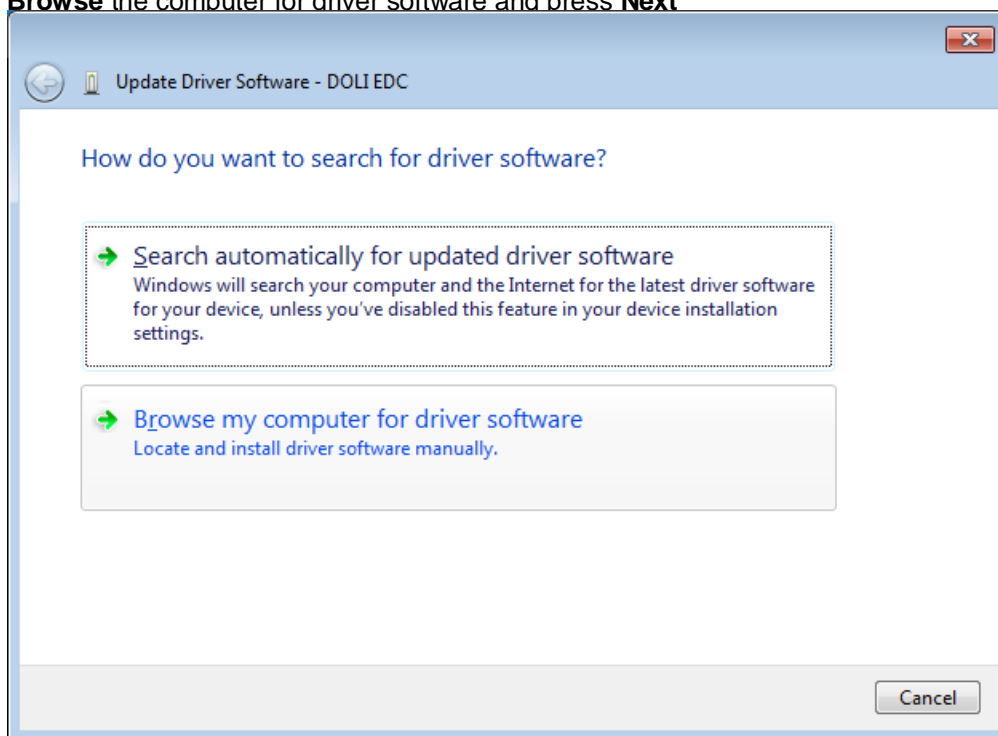
Communication Driver Units

- Connect the USB cable from your PC with the EDC.
- To open the Device Manager click **Start**, type **devmgmt.msc** and press **Enter**. Then right click on the DOLI EDC icon and select **Update Driver Software...**

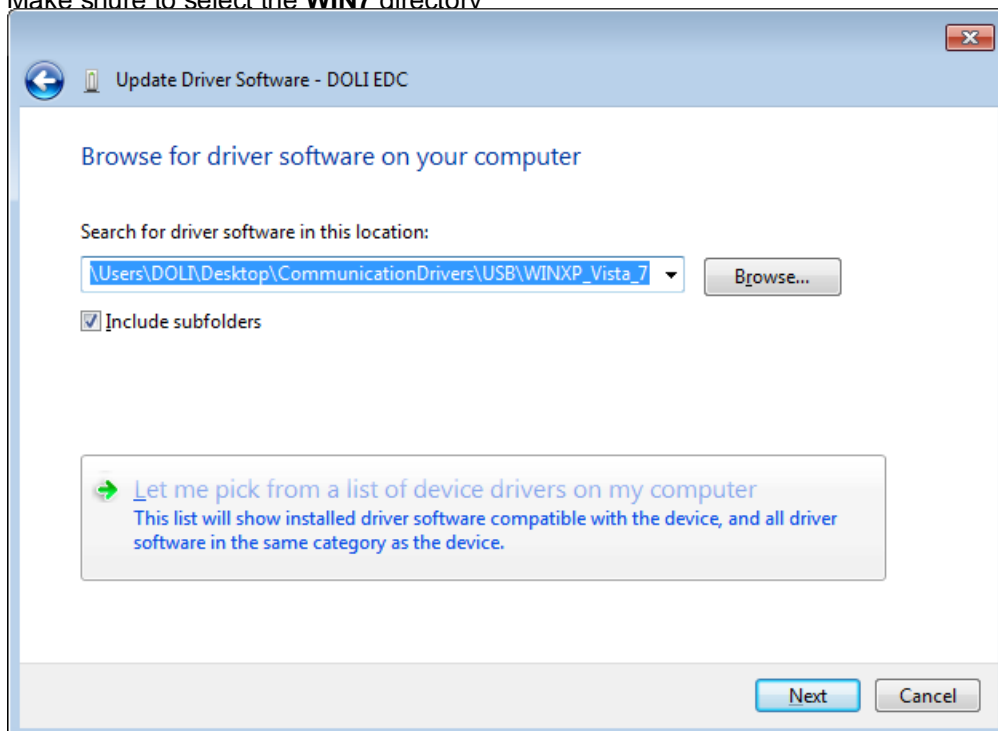


Communication Driver Units

- **Browse** the computer for driver software and press **Next**

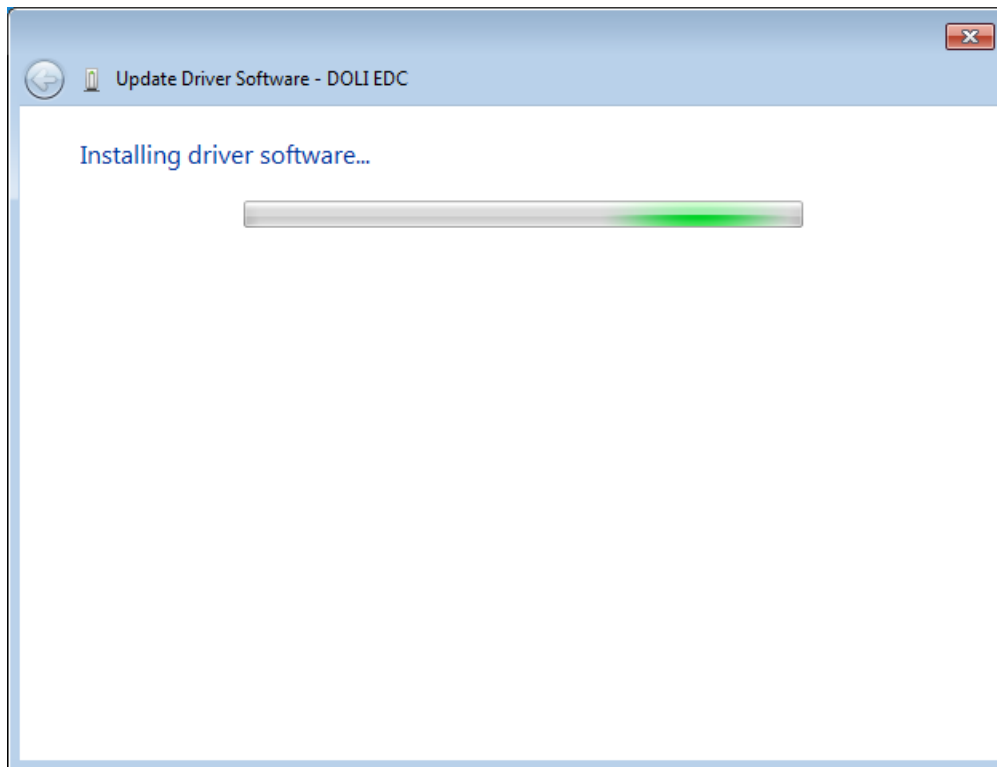


Make shure to select the **WIN7** directory

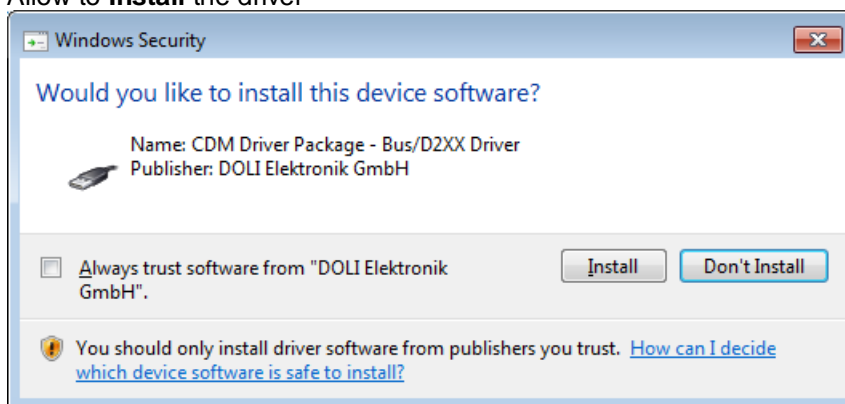


Communication Driver Units

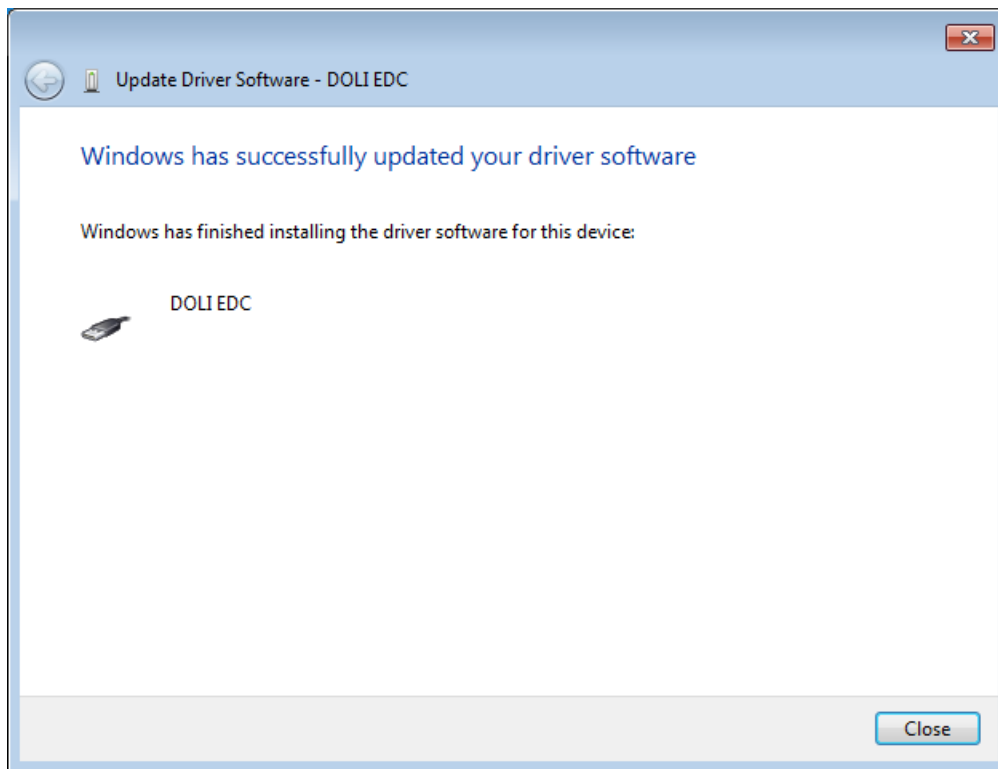
- The installation starts.



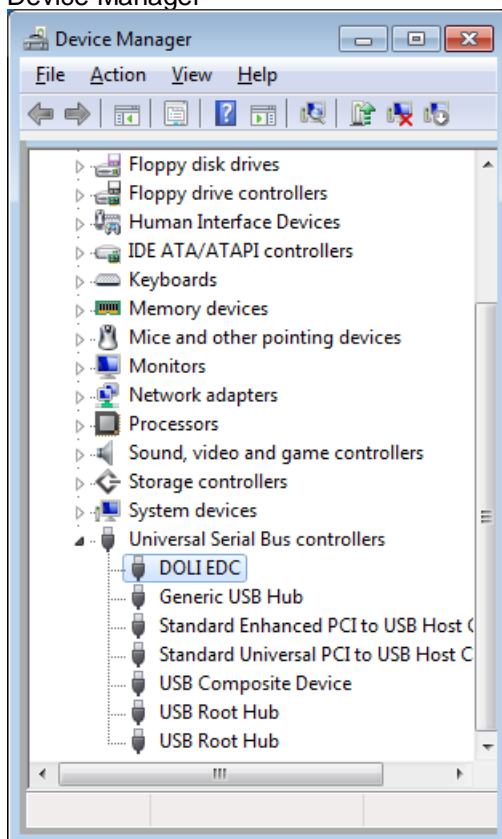
Allow to **Install** the driver



Communication Driver Units



After successfully installing the driver the EDC appears in Universal Serial Bus Controllers section of the Device Manager

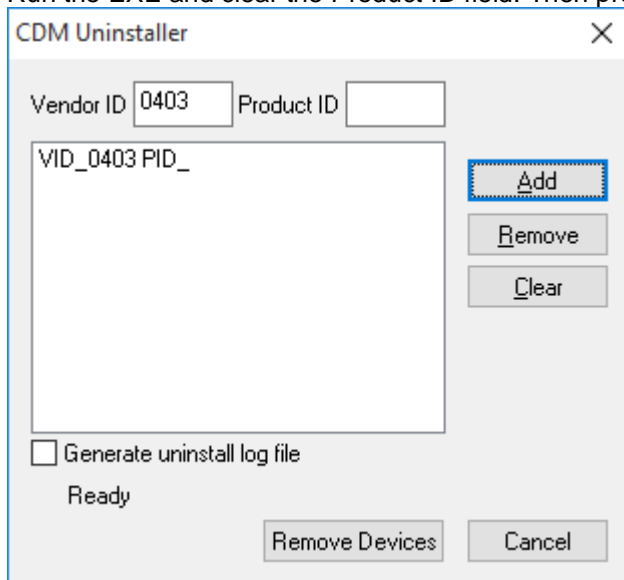


Communication Driver Units

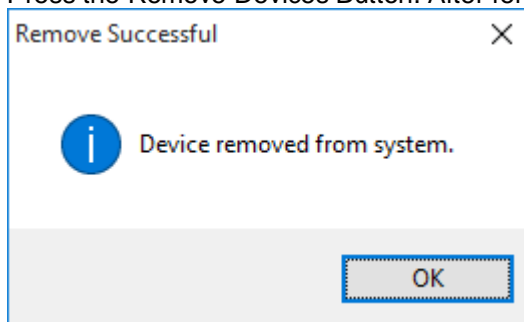
1.1.3 Uninstalling USB Drivers

In the CommunicationDrivers USB directory we provide the CMDUninstallerGUI.exe tool.

- Run the EXE and clear the Product ID field. Then press the Add Button:



- Press the Remove Devices Button. After removing the driver the uninstaller will report success:



For more details refer to the readme.html file in the CMDUninstallerGUI directory.

Note: Under Windows 7 and above you should run the uninstaller with administrator rights.

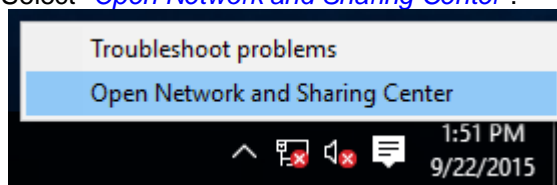
Note: Never install USB drivers of different versions on the same machine. This would lead to unpredictable results.

Communication Driver Units

1.2 Network Installation Guide for Windows 7, 8, 8.1 and 10

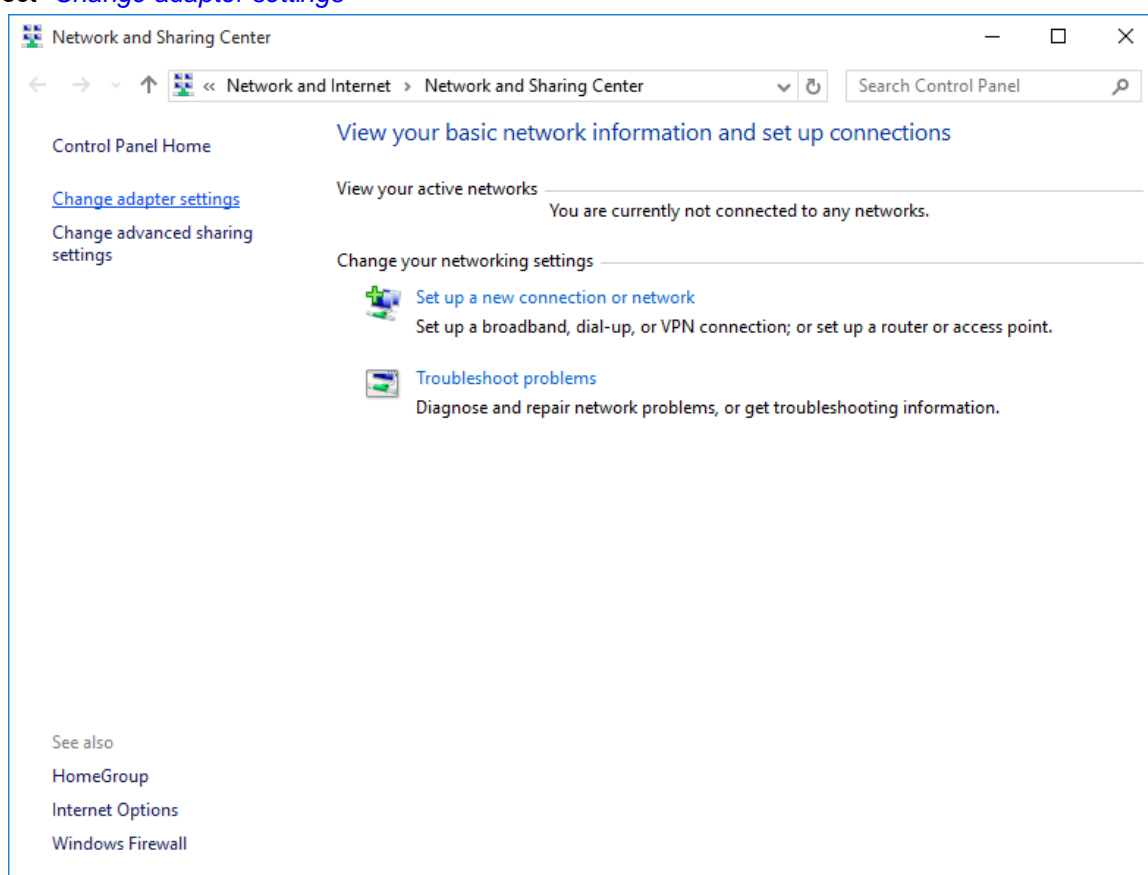
Note: Please make sure that your computer has installed a dedicated network card which can be used exclusively for communication with DOLI devices.

- Uninstall any previously installed versions of WinPcap from
[Start](#) → [Apps and Features](#)
- Start your PC and right click on the network icon in the system tray. Select "[Open Network and Sharing Center](#)".



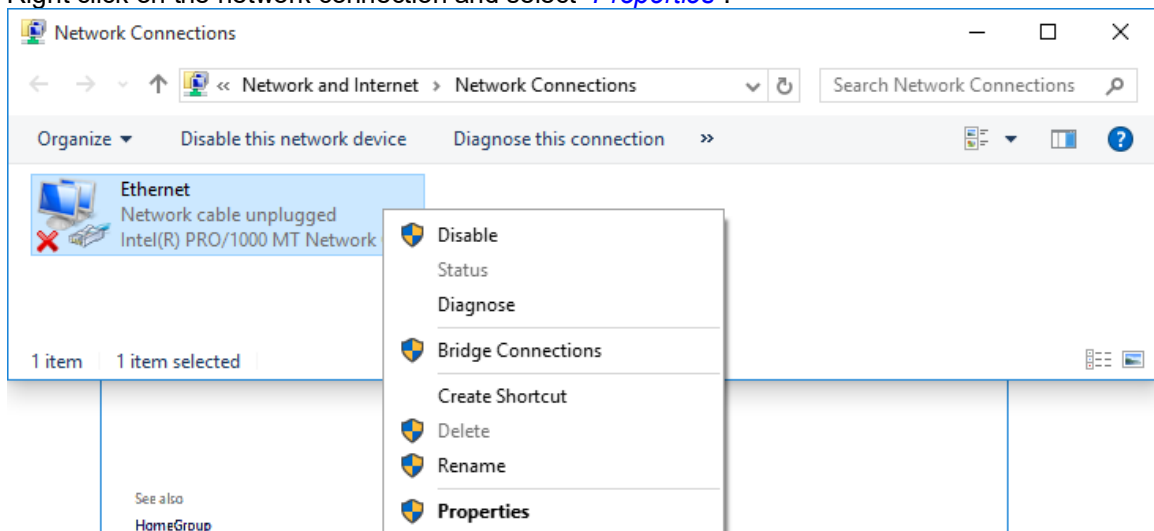
The "[Network and Sharing Center](#)" window opens.

Select "[Change adapter settings](#)"

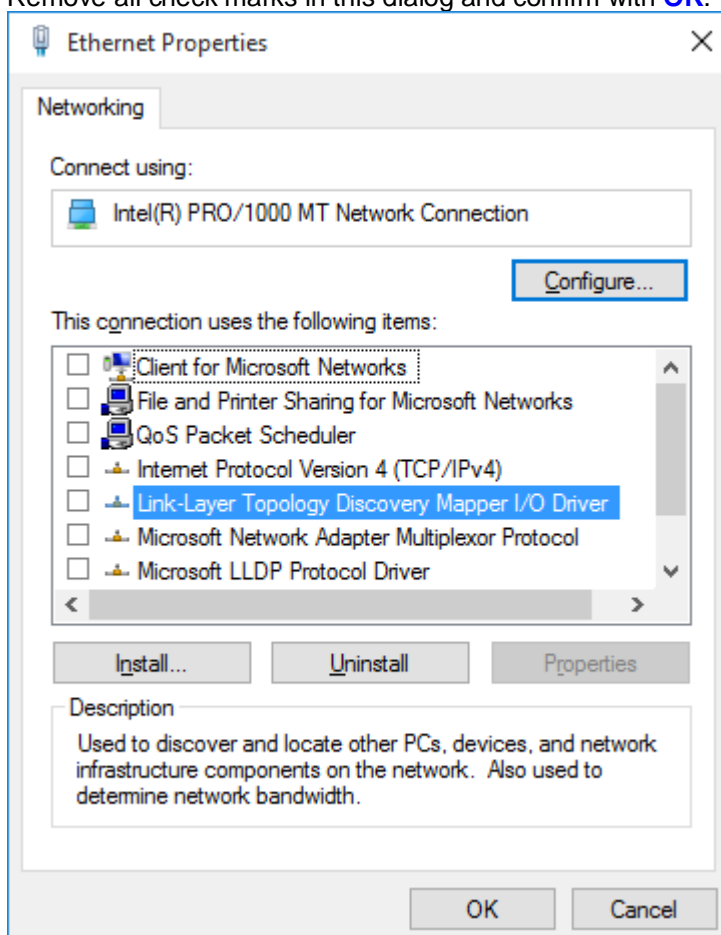


Communication Driver Units

- Right click on the network connection and select “*Properties*”.



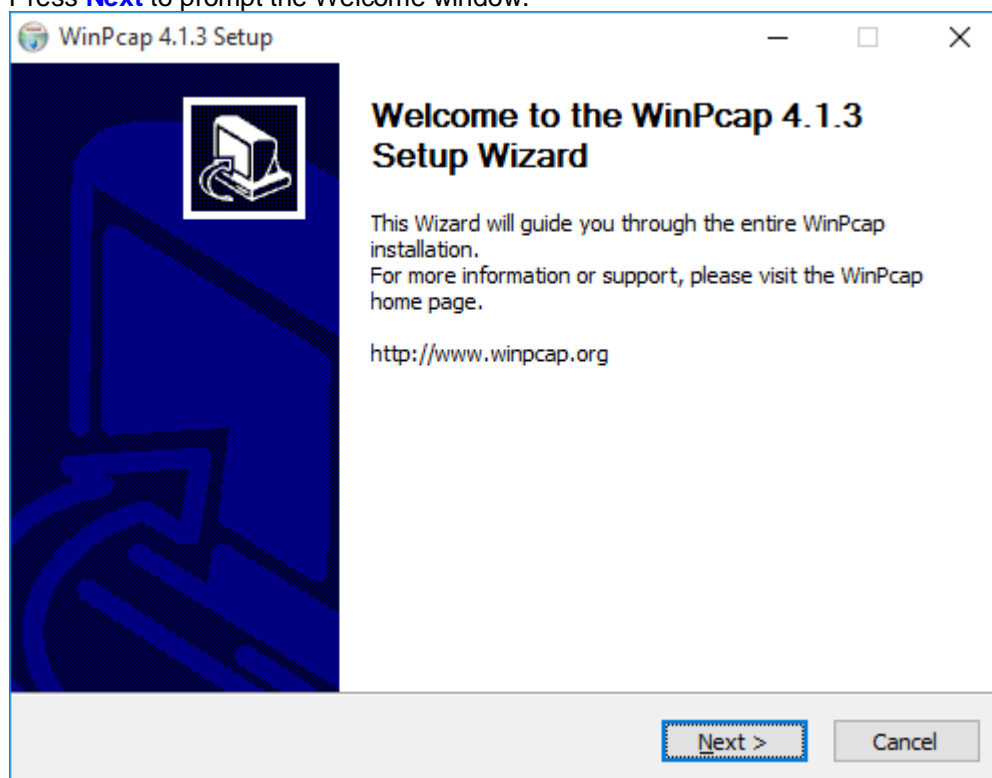
- Remove all check marks in this dialog and confirm with **OK**.



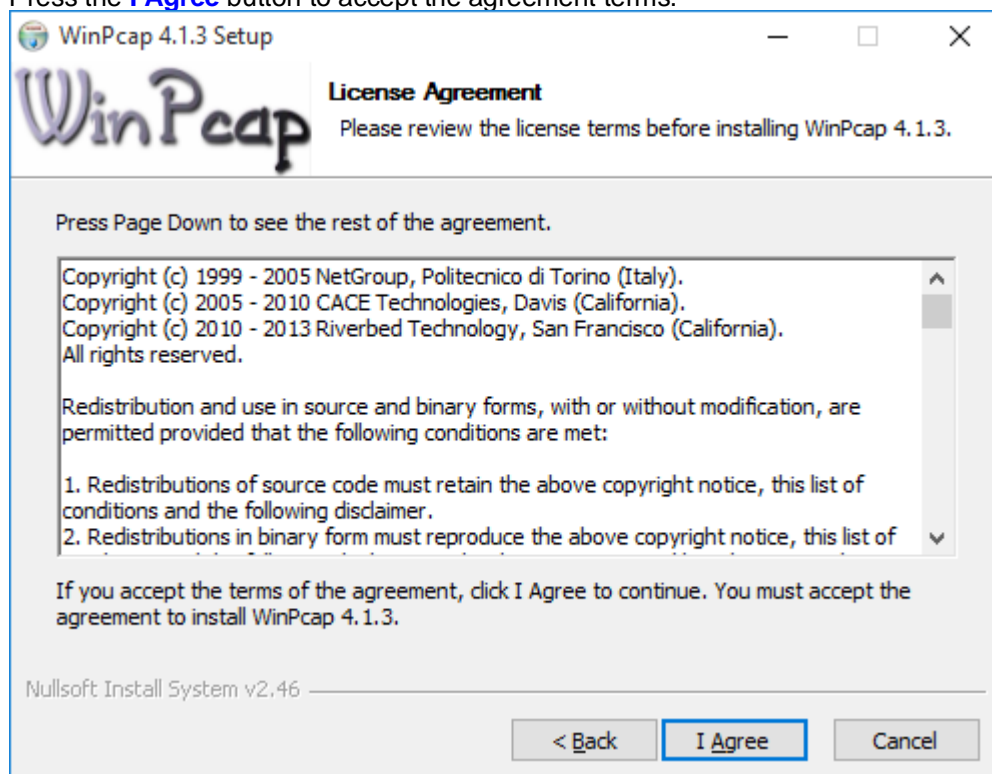
Communication Driver Units

Install the WinPcap driver as follows:

- Locate the driver in your installation path (e.g. C:\Programm Files\Doli\CommunicationDrivers\LAN)
- Doubleclick on the driver file: WinPcap_4_1_3.exe. The WinPcap 4.1.3 Installer starts to install.
- Press **Next** to prompt the Welcome window.

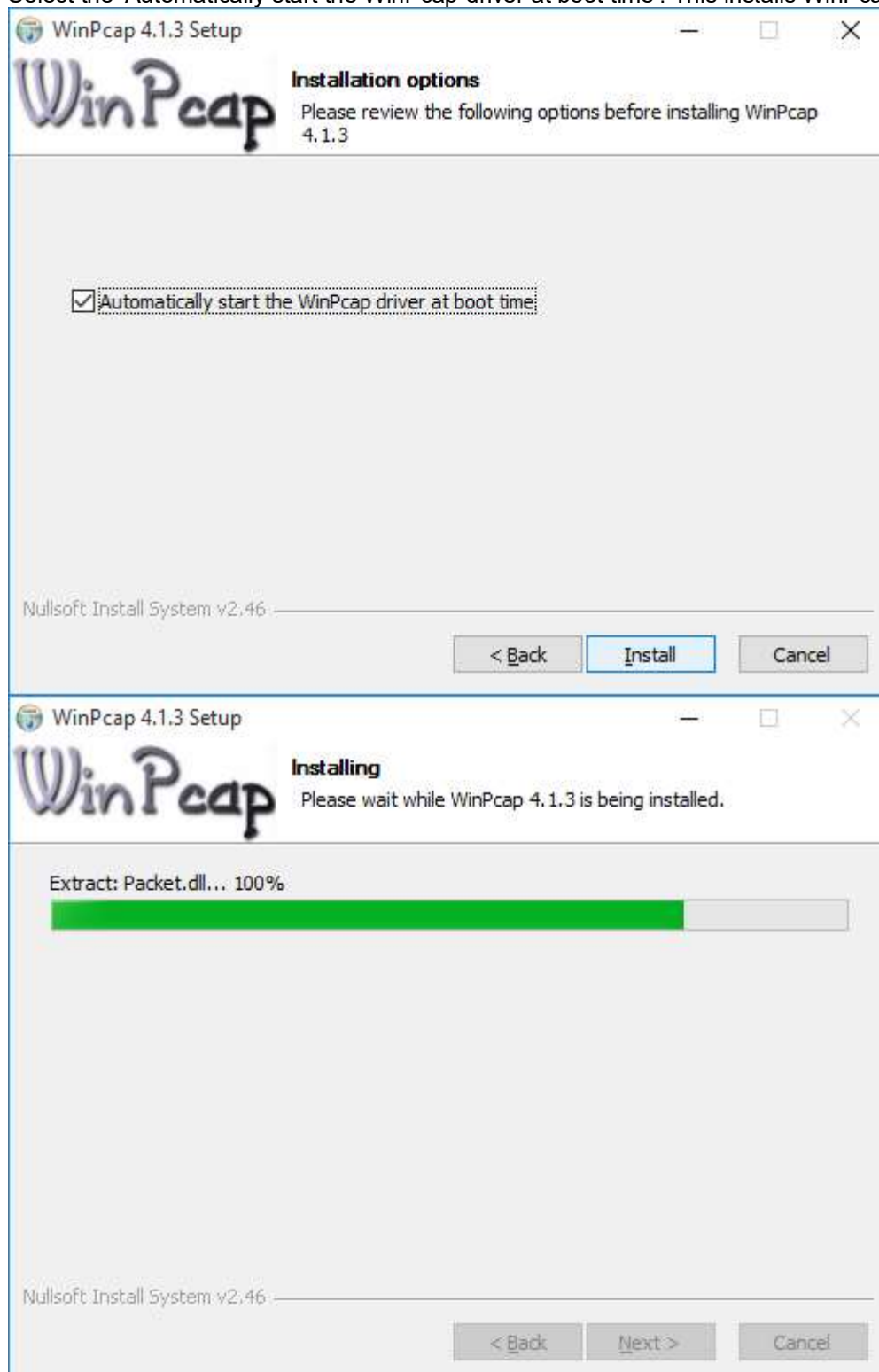


- Press the **I Agree** button to accept the agreement terms.



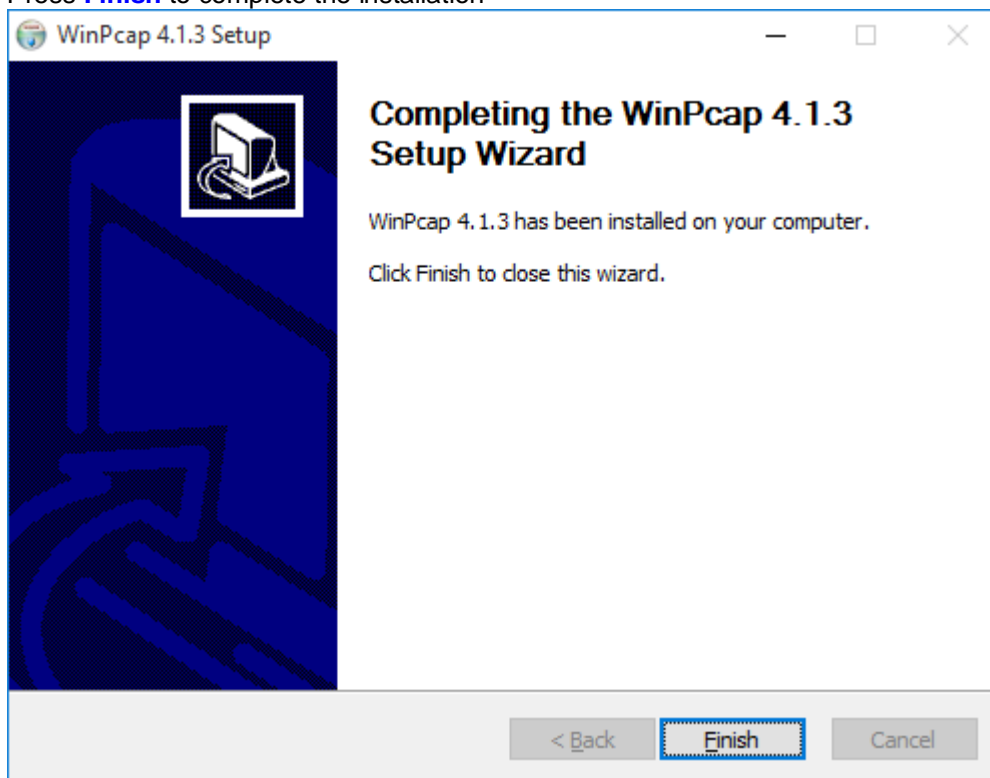
Communication Driver Units

- Select the 'Automatically start the WinPcap driver at boot time'. This installs WinPcap for all users.



Communication Driver Units

- Press **Finish** to complete the installation



- Restart your computer.



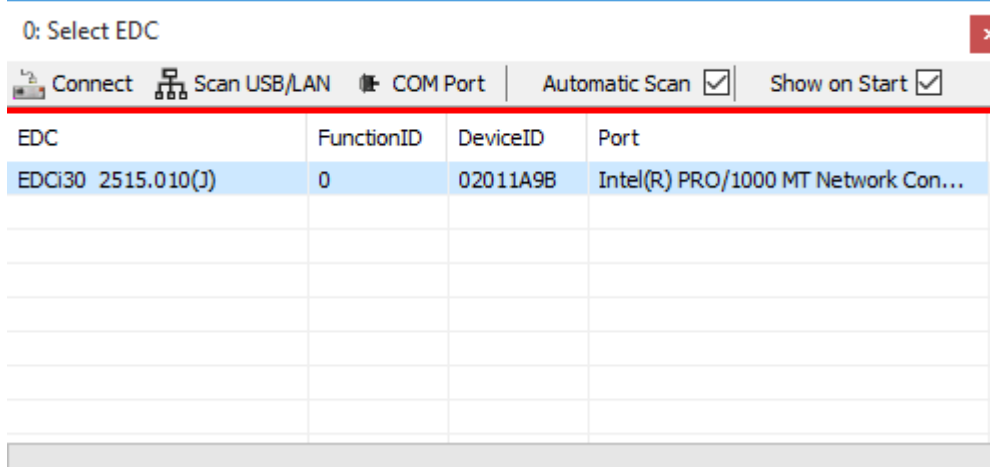
Use a Crossover LAN cable. Normal patch cables may not work with older Network Interface Cards for point to point PC / EDC connections.

1.2.1 Installation check with DOLI Installation Center

In the next step you can test the installation with DOLI Installation Center.

Note: Make sure that the network cable is connected from the EDC to the PC and the EDC is in PC-CONTROL mode

- Start the DOLI Installation Center and press “Scan USB/LAN”. The EDC should be listed in the dialog.



- The LAN drivers have been installed successfully.